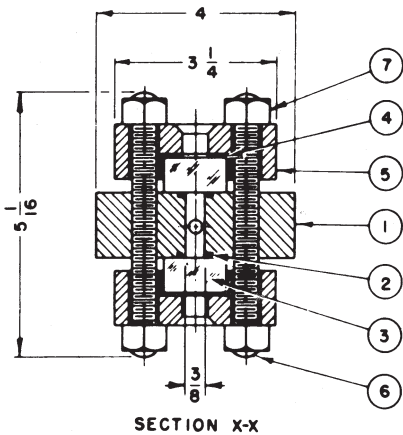
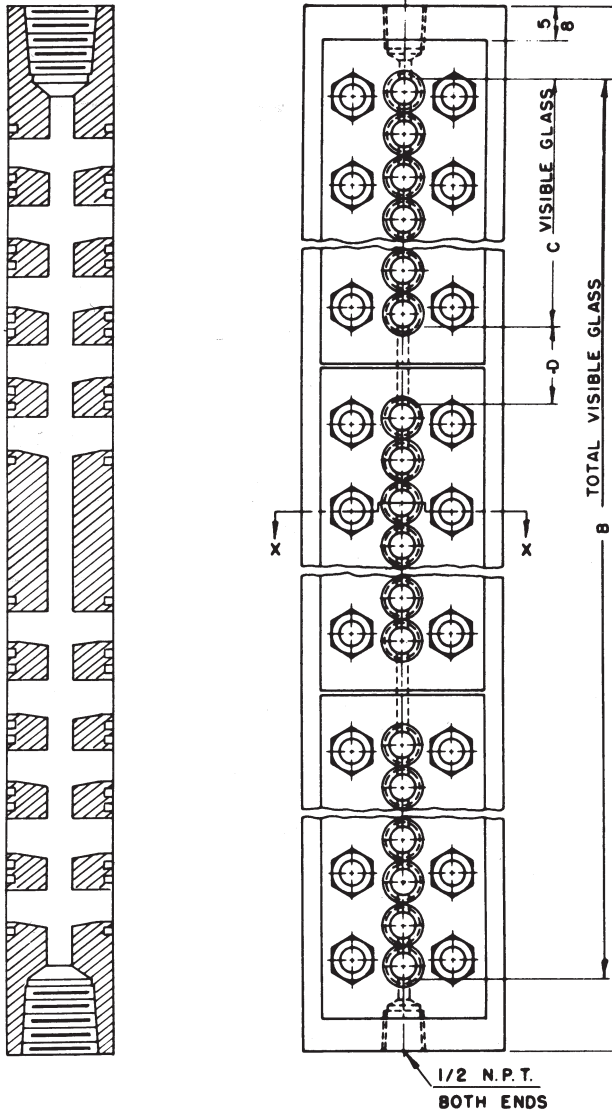


SERIES 51 LIQUID LEVEL GAGES



SIZE NO.	DIMENSION IN INCHES				NO. OF PORTS
	A	B	C	D	
SINGLE SECTION GAGE					
11-T-51	6 $\frac{1}{2}$ "	3 $\frac{3}{8}$ "	3 $\frac{3}{8}$ "		5
12-T-51	7 $\frac{1}{2}$ "	4 $\frac{1}{8}$ "	4 $\frac{1}{8}$ "		6
13-T-51	8 $\frac{1}{2}$ "	5 $\frac{1}{4}$ "	5 $\frac{1}{4}$ "		7
14-T-51	9 $\frac{1}{2}$ "	6 $\frac{1}{8}$ "	6 $\frac{1}{8}$ "		8
15-T-51	10 $\frac{1}{2}$ "	7 $\frac{1}{8}$ "	7 $\frac{1}{8}$ "		10
16-T-51	11 $\frac{1}{8}$ "	8 $\frac{1}{2}$ "	8 $\frac{1}{2}$ "		11
17-T-51	13"	10 $\frac{1}{8}$ "	10 $\frac{1}{8}$ "		13
18-T-51	14 $\frac{3}{8}$ "	11 $\frac{3}{4}$ "	11 $\frac{5}{8}$ "		15
19-T-51	15 $\frac{1}{2}$ "	12 $\frac{3}{8}$ "	12 $\frac{3}{8}$ "		16
TWO SECTION GAGE					
23-T-51	15 $\frac{1}{4}$ "	12 $\frac{1}{2}$ "	5 $\frac{1}{4}$ "	2"	14
24-T-51	17 $\frac{3}{4}$ "	14 $\frac{3}{8}$ "	6 $\frac{1}{8}$ "	2 $\frac{3}{8}$ "	16
25-T-51	20"	17 $\frac{1}{8}$ "	7 $\frac{1}{8}$ "	1 $\frac{1}{8}$ "	20
26-T-51	22 $\frac{1}{2}$ "	19 $\frac{1}{8}$ "	8 $\frac{1}{2}$ "	2 $\frac{1}{8}$ "	22
27-T-51	24 $\frac{3}{4}$ "	21 $\frac{1}{8}$ "	10 $\frac{1}{8}$ "	1 $\frac{5}{8}$ "	26
28-T-51	28"	25 $\frac{1}{2}$ "	11 $\frac{3}{4}$ "	1 $\frac{5}{8}$ "	30
29-T-51	29 $\frac{1}{2}$ "	26 $\frac{1}{8}$ "	12 $\frac{3}{8}$ "	1 $\frac{1}{8}$ "	32
THREE SECTION GAGE					
36-T-51	33 $\frac{1}{8}$ "	29 $\frac{1}{4}$ "	8 $\frac{1}{2}$ "	2 $\frac{1}{8}$ "	33
37-T-51	36 $\frac{1}{2}$ "	33 $\frac{3}{8}$ "	10 $\frac{1}{8}$ "	1 $\frac{5}{8}$ "	39
38-T-51	41 $\frac{1}{8}$ "	38 $\frac{1}{2}$ "	11 $\frac{3}{4}$ "	1 $\frac{5}{8}$ "	45
39-T-51	43 $\frac{3}{8}$ "	40 $\frac{3}{8}$ "	12 $\frac{3}{8}$ "	1 $\frac{9}{16}$ "	48
FOUR SECTION GAGE					
47-T-51	48 $\frac{1}{4}$ "	45 $\frac{3}{8}$ "	10 $\frac{1}{8}$ "	1 $\frac{5}{8}$ "	52
48-T-51	54 $\frac{3}{4}$ "	51 $\frac{1}{8}$ "	11 $\frac{3}{4}$ "	1 $\frac{5}{8}$ "	60
49-T-51	57 $\frac{3}{4}$ "	54 $\frac{15}{16}$ "	12 $\frac{3}{8}$ "	1 $\frac{9}{16}$ "	64
FIVE SECTION GAGE					
57-T-51	60"	57 $\frac{1}{8}$ "	10 $\frac{1}{8}$ "	1 $\frac{5}{8}$ "	65
58-T-51	68 $\frac{3}{8}$ "	65 $\frac{1}{4}$ "	11 $\frac{3}{4}$ "	1 $\frac{15}{16}$ "	75
59-T-51	71 $\frac{1}{8}$ "	69 $\frac{1}{8}$ "	12 $\frac{3}{8}$ "	1 $\frac{9}{16}$ "	80

NOTES:

1. STANDARD HYDROTEST PRESSURE IS 1.5 TIMES THE GAGE GLASS RATED PRESSURE.
2. WHEN ORDERING, STATE MAXIMUM WORKING PRESSURE - TEMPERATURE.
3. WHEN ORDERING SPARE OR REPLACEMENT GLASS, SPECIFY "H.P." AND GAGE SIZE

BILL OF MATERIAL		
PIECE NO.	NAME OF PIECE	STANDARD MATERIAL
1	CHAMBER	BAR STEEL
2	O-RING	VITON-A*
3	GLASS	TEMPERED
4	CUSHION	FIBROUS
5	COVER	BAR STEEL
6	STUD	ALLOY STEEL
7	NUT	ALLOY STEEL

* OTHER COMPOUNDS TO SUIT APPLICATION ARE AVAILABLE.



JERGUSON® GAGE AND VALVE
 A Division of The Clark • Reliance® Corporation
 13200 North Promenade • Stafford, TX 77477 USA
 Telephone: (281) 240-4243 Fax: (281) 240-7299

JERGUSON® GAGE AND VALVE
 A Division of The Clark • Reliance® Corporation
 16633 Foltz Industrial Parkway • Strongsville, OH 44136 USA
 Telephone: (440) 572-1500 Fax: (440) 238-8828

REPRESENTED BY: YATES & COMPANY, INC. 1 Hollywood Ave, Unit 22 HoHoKus, NJ 07423
 Tel: 201-345-3101 ♦ Email: info@yatesco.net