

Jacketed valves for use with heated or cooled gages or other services where small jacketed angle valves are required

■ Plain or quick closing stem

■ Re grindable and renewable seat

Jerguson No. 90 Series Valves are designed especially for use with heated or cooled gages. A jacket surrounding the valve permits circulation of the heating or cooling medium. Four ¼" holes are tapped into the jacket for connection to the heating-cooling supply and/or tracing tube.

NO. 90 SERIES VALVES

The series consists of the following valves:

- No. 93 - Jacketed valve with union vessel connection and non-union gage connection.
- No. 94 - Jacketed valve with union vessel connection and union gage connection.

PRESSURE RATINGS

Valve 4000 lbs. @ 100° F., 1500 lbs. @ 750° F.
Jacket 600 lbs. W.S.P.

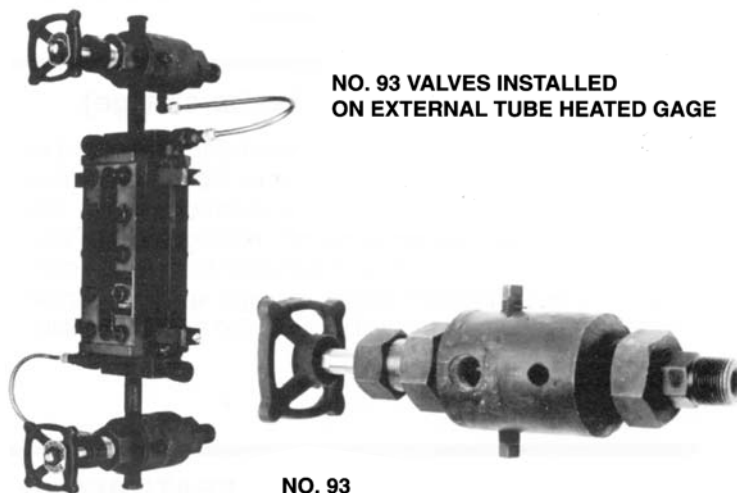
STANDARD FEATURES

Convertible to Quick Closing: Plain closing threads and handwheels are standard. Quick-closing valves, stems and levers for chain operation can be furnished upon request at no extra cost. These stems have a quadruple thread for full closing or opening in ¼" turn. Valves can be converted at any time by replacement of stem and sleeve.

Regrindable, Renewable Seat: Union sleeve bonnet construction permits regrinding of valve seat. Valve seat may be renewed by removing the seat with a standard wrench.

Union Vessel Connection: A union vessel connection allows the valve to be easily installed and permits access to the ballcheck without disassembling valve.

Union Gage Connection: No. 94 has a union gage connection which permits a top and bottom connected gage to be rotated to any convenient position or, when the valve is closed, permits removal of the gage without draining or removing pressure from the vessel.

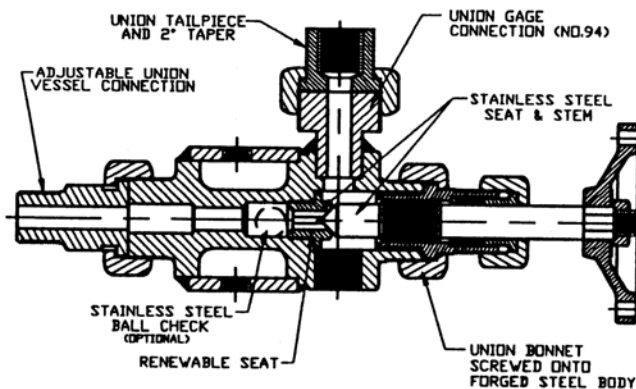


NO. 93 VALVES INSTALLED
ON EXTERNAL TUBE HEATED GAGE

NO. 93



NO.94



TYPICAL CUTAWAY VIEW
(#94 SHOWN)

NO. 90 SERIES VALVES

MATERIALS

Type 416 stainless steel seat, Type 416 stainless steel stem. Carbon steel body and jacket with malleable iron handwheel or lever.

Materials used conform to or exceed requirements of A.I.S.I., A.S.T.M., and/or A.P.I.-A.S.M.E. for recommended pressures.

Safety Shut-off: No. 90 Series Valves provided with a stainless steel ballcheck which instantaneously shuts off flow of medium being gaged in case of glass breakage. The ball operates upstream from the seat and can be furnished for vacuum seating if required.

STANDARD CONNECTIONS

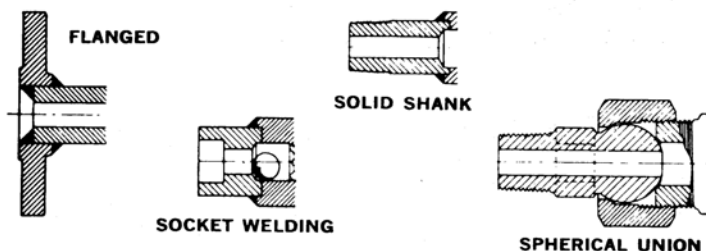
Vessel: $\frac{3}{4}$ " N.P.T. Male
 Drain: $\frac{1}{2}$ " N.P.T. Female
 Gage: $\frac{1}{2}$ " N.P.T. Female
 Jacket connections: four $\frac{1}{4}$ " Female

OPTIONAL CONNECTIONS

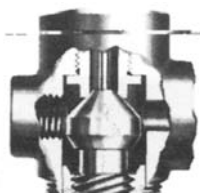
Vessel: $\frac{1}{2}$ " Male or Female $\frac{3}{4}$ " Female
 Gage: $\frac{3}{4}$ " Female $\frac{1}{4}$ " Female or $\frac{1}{2}$ "
 or $\frac{3}{4}$ " Male Union on No. 94

SPECIAL CONNECTIONS (extra charge)

No. 90 Series Valves can be furnished with $\frac{3}{4}$ " flanged or male welding end vessel connections. Spherical unions are available on both tank and gage connections (No. 94) which will compensate for up to 10° misalignment of tapping and up to plus or minus $\frac{3}{4}$ " variation from mean centers. On side connected gages a single spherical union on the outlet connections will provide the same flexibility.



SPECIAL FEATURES (extra charge)



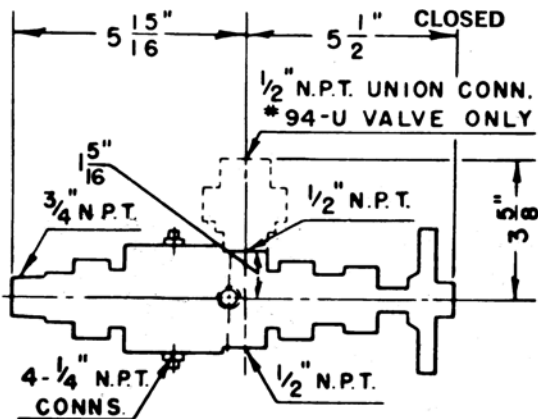
Backseating Stem: When stem is backed out to its limit a knob on the stem seats against the sleeve permitting stem to be repacked under pressure.



Bleed Fitting: A bleed fitting is available making it possible to bleed pressure from the valve and connected instrument without breaking any threaded connections. The bleed fitting is designed so its stem cannot be withdrawn accidentally. It is tapped for $\frac{1}{8}$ " discharge tube.

ROUGHING DIMENSIONS

For side connected gages: Refer to unit gage selected to determine centers. No. 90 Series valve centers will be equal to gage centers.



REPRESENTED BY: YATES & COMPANY, INC.
 1 Hollywood Ave, Unit 22 HoHoKus, NJ 07423
 Tel: 201-345-3101
 Email: info@yatesco.net

JERGUSON® GAGE AND VALVE

A Division of The Clark • Reliance® Corporation
 16633 Foltz Industrial Parkway • Strongsville, OH 44149 USA
 Telephone: (440) 572-1500 • Fax: (440) 238-8828